

gabotherm®

Radiator Connection



Pipes and Couplings	67
Connection Units	67
Covering Accessories	68
Connecting Material	69

gabootherm® Radia:

Tried and tested radiator connection system for laying connection pipes on the unfinished floor.

The gabootherm® pipes are laid in a coloured protective pipe made from polyethylene. The pipe-in-a-pipe principle produces an air space that acts as a thermal insulation against heat loss and is simultaneously used as a free space for thermal stresses. Furthermore, this system makes it possible to exchange the interior pipe with a pipe of a different dimension (using the corresponding gabootherm® replacement device) at a later stage without any difficulties.

Depending on the installation situation (e.g. ceilings against non-heated rooms or ceilings against soil), the gabootherm® protective pipe is available with 50% or with 100% thermal insulation.

Different connection units are available for different radiator types.

For example, various protective pipe elbows with connecting fixtures for the guided redirection of the pipe are available for one-way or two-way wall or floor connections. Various double collars, cover rings and slit sleeves for sheathing the piping are available in white colour for rounding off the visual appearance.

The gabootherm® wall and floor connection box with ½" internal thread for press or clamp connections can be used to connect radiators with metal or nickel-plated pipes.

The radiator pipes are connected to the gabootherm® manifold station (GT-VS 1"), which disposes of ¾" euro-cone connections. These euro-cone connections can be connected to press or clamp pipes using coupling adapters in the corresponding pipe dimension. Available manifold accessories include bleed valves, heat quantity counter set and distribution boxes with door and frame or with on-wall cover.




Attention:

When using PE-Xc and PE-RT pipes, at least two bends of 90° with a centre-to-centre distance of 250 mm must be installed before each manifold connection and each radiator connection in both the inlet and the return flow.

For the remaining pipe sections, the longitudinal expansion must be taken into account.

suitable gabotherm® pipes for radiator connection



	12 x 1.3	14 x 2.0	15 x 1.5	16 x 2.0	18 x 2.0	20 x 2.0
PB	x	x	x	x	x	x
Pe-Xc		x		x	x	x
PE-RT				x	x	x
MV				x	x	x

For available coil sizes and prices, see chapter Pipes.

Some pipes are also available in a protective pipe or in a protective pipe with insulation (50/100%)

Coupling Adapter

made from brass, with 3/4" euro-cone, consisting of main casting with O-ring, clamping ring and cap nut, for connecting gabotherm® pipes to the distributor station and to radiator valves from e.g. Heimeier, Herz, Taco etc.



Code	Type	Unit	Item ID
GT-KA	12 x 1.3	20 pieces	12655
	14 x 2.0	20 pieces	07726
	15 x 1.5	20 pieces	12656
	16 x 2.0	20 pieces	07725
GTF-KA	18 x 2.0	20 pieces	07730
	20 x 2.0	20 pieces	07728

Pipe Coupling

with tested self-sealing at the 1/2" external thread according to DIN 8076.

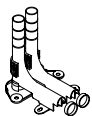


Code	Type	Unit	Item ID
GT-K	12 x 1.3 SD 1/2"	20 pieces	12733
	14 x 2.0 SD 1/2"	20 pieces	07440
	15 x 1.5 SD 1/2"	20 pieces	00404
	16 x 2.0 SD 1/2"	20 pieces	07444
GTF-K	18 x 2.0 SD 1/2"	20 pieces	03498
	20 x 2.0 SD 1/2"	20 pieces	09945

Connection Units

Variable Protective Pipe Elbow

for floor connections, with base plate, adjustable for valve centre-to-centre distances of 35-65 mm, with protective pipe arrester for GT pipe 12-16 mm, consisting of 2 protective pipe elbows, 1 base plate set.

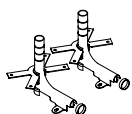


Code	Type	Unit	Item ID
GT-BV	25	5 sets	00212

A replacement device for exchanging the pipe-in-pipe connection units is available on request.

Protective Pipe Elbow

for two-way floor and wall connections with connecting flange, with protective pipe arrester for GT pipe 12-16 mm, consisting of: 2 protective pipe elbows, 2 connecting flanges, 8 dowels and screws.



Code	Unit	Item ID
GT-BW	5 sets	05126

Protective Pipe Elbow

with connecting flange for wall connections, centre-to-centre distance: 50 mm, for valve-radiators;
consisting of: 1 connecting flange, 4 dowels and screws.



Code	Unit	Item ID
GT-BW 50	5 sets	06585

Protective Pipe Elbow

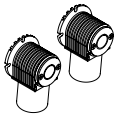
for two-way floor and wall connections with connecting flange, with protective pipe arrestor
for GT pipe 12-16 mm.



Code	Unit	Item ID
GT-B	5 sets	05120

Wall and Floor Connection Box

with adapter receptacle (euro-cone), for centre-to-centre distances starting from 45 mm.

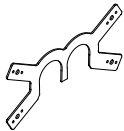


Code	Unit	Item ID
GT-WBA	1 pair	02784

Connecting flanges for wall mounting and coupling adapters must be ordered separately.

Connecting Flange

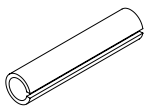
made from zinc-plated sheet metal, for the wall and floor connection box GT-WBA, for wall connections of valve-radiators. Centre-to-centre distance: 50 mm.



Code	Unit	Item ID
GT-BF 50 WBA	5 pieces	06110

Covering Accessories
Slit Sleeve

for sheathing the pipe at the radiator; colour white.



Code	Type	Unit	Item ID
GT-M	length 20 cm	10 pieces	01066
	length 2 m	1 piece	01024

Floor Collar

for covering the protective pipe elbow in the floor covering; colour white.



Code	di	D	Unit	Item ID
GT- R	28 mm	70 mm	10 pieces	00914

Variable Double Collar

for covering the pipe outlets at radiators with integrated valves (35-70 mm);
VDR 15 when using Cu-connections d 15 and d 1/2"; colour white;



Code	Height	D	Unit	Item ID
GT- VDR	13 mm	28 mm	20 pieces	04030
GT- VDR 15	15 mm	15 mm 1/2"	20 pieces	06560

Covering Plug

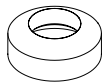
for covering the crack between pipe and protective pipe elbow.



Code	Type	di	Unit	Item ID
GT-AS	12	12 mm	100 pieces	05712
	14	14 mm	100 pieces	03530
	16/15	1 6 mm	100 pieces	05515

Covering Ring

for covering the crack between protective pipe and pipe at the distributor.



Code	Type	di	Unit	Item ID
GT-A	12	12 mm	100 pieces	05713
	14	14 mm	100 pieces	03533
	16/15	1 6 mm	100 pieces	05516

Fastening Material

Single Pipe Clip

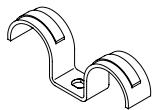
made from metal, for pipe in protective pipe;



Code	d / protective pipe	Unit	Item ID
GT-S 21	21	100 pieces	05128
GFL-S 25	25	100 pieces	08341

Double Pipe Clip

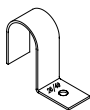
made from metal, for pipe in protective pipe;



Code	d / protective pipe	Unit	Item ID
GT-DS 21	21	100 pieces	03360
GFL-DS 25	25	100 pieces	08343

Single Pipe Clip

made from metal, for 100% insulated pipe in protective pipe; for construction height up to 50 mm;



Code	d / protective pipe	Unit	Item ID
GT-S 50	21-25	50 pieces	04831

Hammer-In Dowel

for fastening the pipe clips, length 35 mm;



Code	Unit	Item ID
GT-SD 35	200 pieces	10412

0